

Stay
Protected



stylmark®



Tabletop or
counters



CAFE BARRIER SYSTEM BY STYLMARK

ACRYLIC OR GLASS
SOLD SEPARATELY

ALUMINUM ANODIZED POST

Posts come in two standard sizes of either 24" or 36" in length, and in two colors, Clear Natural Satin and Satin Brass finishes.

MOUNTING

Posts can be mounted directly through table top via several mounting kits, or by our optional clamping systems.

Single / Double Post Surface Mount Kit
511070-020 Satin Natural
511070-021 Satin Brass

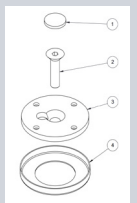
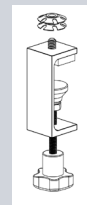
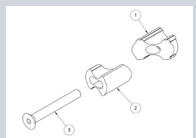


Table Top Clamp Mount
511216-020 Satin Natural
511216-021 Satin Brass



511069 Fluted Post Mounting Kit



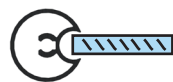
511079-020 Glass Clamp Satin Natural
511079-021 Glass Clamp Satin Brass



DESIGNED FOR 1/4" ACRYLIC OR GLASS PANELS

System accommodates 1/4" glass or acrylic panels. Great for creating a safe divider or barrier on just about any surface.

- 491008-01-020 24" Satin Natural
- 491008-01-021 24" Satin Brass
- 491008-02-020 36" Satin Natural
- 491008-02-021 36" Satin Brass



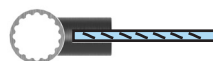
Single Groove Post

- 491009-01-020 24" Satin Natural
- 491009-01-021 24" Satin Brass
- 491009-02-020 36" Satin Natural
- 491009-02-021 36" Satin Brass



Double Groove Post

- 491007-01-020 24" Satin Natural
- 491007-01-021 24" Satin Brass
- 491007-02-020 36" Satin Natural
- 491007-02-021 36" Satin Brass



Fluted post for Glass Clamp

- End Cap Kit for Single / Double Groove Post**
- 310614-020 End Cap Kit Satin Natural
- 310614-021 End Cap Kit Satin Brass



Post End Cap

- End Cap Kit for Fluted Post**
- 511085-020 End Cap Kit Satin Natural
- 511085-021 End Cap Kit Satin Brass

Info@Stylmark.com

In stock and ready to ship



CALL US NOW
1 800 328 2495