



Data Sheet

Optima 300 LED® Edge-Lit Light Box



General Description: The Optima 300 LED® Edge-Lit Light Box is designed as an economical LED edge-lit light box suitable many of the standard graphic sizes. Utilizing narrow face frames makes changing graphics a snap. The unique LED placement and advanced design delivers bright, even illumination & eliminates hot spots. Available in as single-sided or double-sided, the Optima 300 LED Edge-Lit Light Box can be wall mounted or suspended from the ceiling. Custom-sized units are also available, contact Stylmark for additional information.

Applications: Retail environments, airports, museums, restaurants

Key Features:

- Good brightness and even uniformity
- Narrow snap frame
- ADA Compliant, <1" depth from wall
- Standard and custom sizes
- 2-year warranty

Dimensions:

- Cabinet Depth:**
- Single-sided:** 0.78"
- Double-sided:** 1.60"
- Graphic Size:**
- 7 standard sizes (see table)
- Custom sizes (W x H)
- Single-sided maximum size: 72" x 120"
- Double-sided maximum size: 48" x 96"
- Add 7/8" (22mm) to W x H
- Subtract 1 1/8" (29mm) from W x H
- Cabinet Size:**
- Visual Size:**

Lighting Performance: Exceeds 300 f.c.²

Light Color Temperature: 6500K (5300K, 3700K by special order)

Construction Specifications:

- Frame Type:** 1" snap frame with mitered corners
- Frame Material:** Anodized aluminum
- Frame Finish:** Satin natural
- Misc.:** clear face sheet included

Power Specifications & Circuit Sizing:

- Voltage:** 100~240VAC (50/60 Hz)
- Current @120VAC:** 0.03A per foot of lit edge¹
- LED Power Consumption:** 3.6 watts per foot of lit edge¹ (@24VDC)
- Power Supply type:** External
- Cord Length:** 60" cord supplied with unit

Weight:

- Single-sided** approx. 3 lbs per sq ft
- Double-sided** approx. 4.6 lbs per sq ft

Environmental Specifications:

- Protection Rating:** For indoor use only – Dry locations
- Temperature Range:** -40 to 104°F (4 to 40°C)

Options:

- Wall Mount (standard)
- Ceiling Mount, double-sided only (contact Stylmark representative)

¹ Typical lit edge length is the sum of the two longer sides of the light box.

² As measured at the center of 24" x 36" (610mm x 915mm) unit.



UL48
File No. E344011

ADA – Compliant

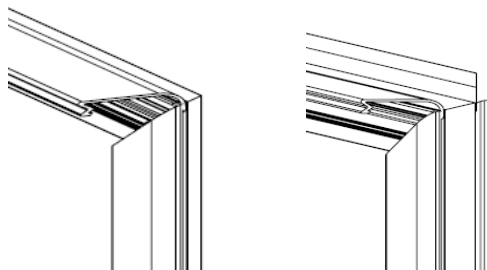
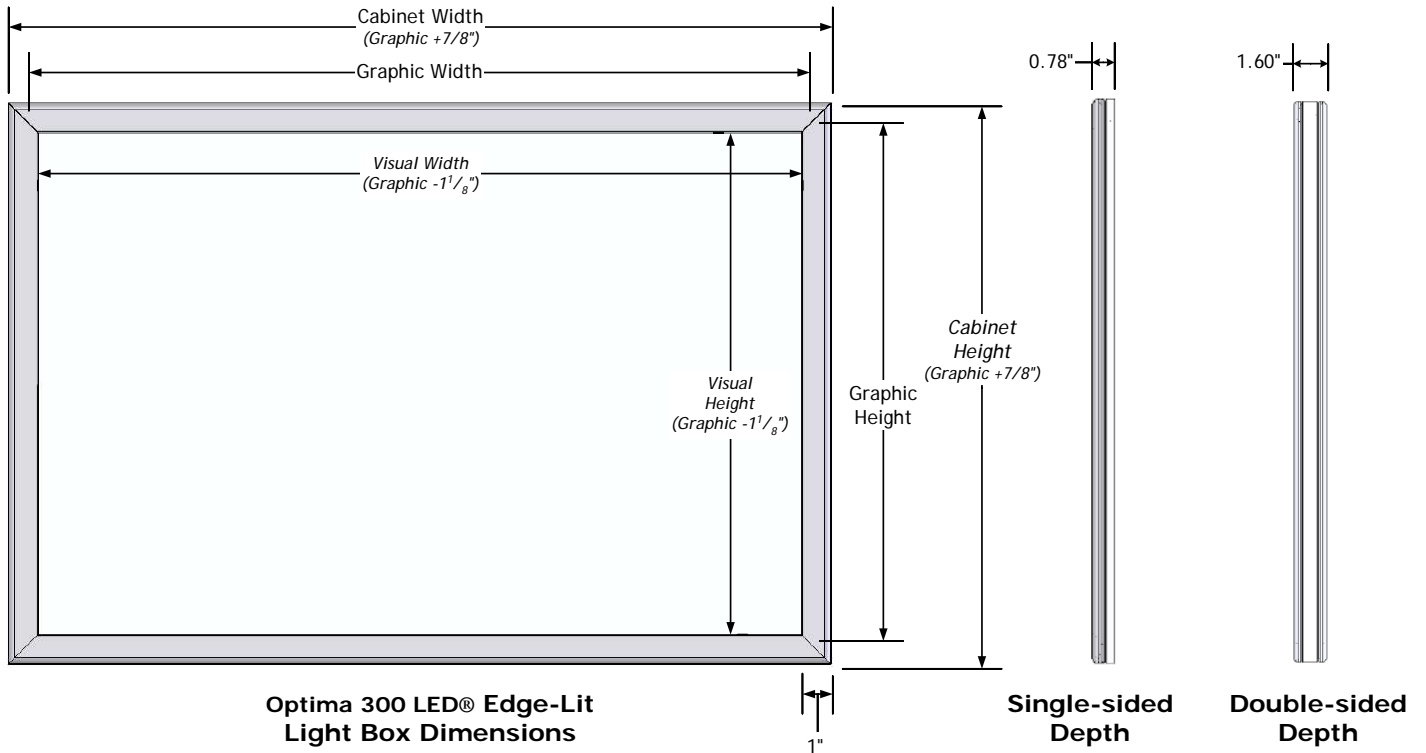
In order to continually improve our products, Stylmark reserves the right to make changes to specifications or materials without prior notice.

Sheet# 971709
Revision F (9/18)

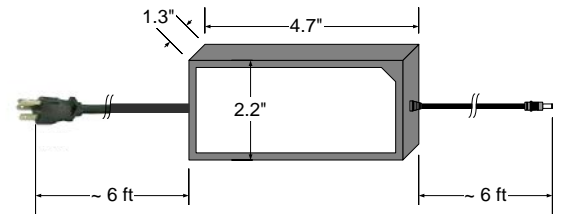
Ordering Information:

Optima 300 LED® Edge-Lit Light Box			
Description	Graphic Size	Visual Size	Cabinet Size
Optima 300 LED Edge-lit Light Box, Single-sided or Double-sided with mitered corner 1" snap frame, satin natural finish	12" x 16"	10 ⁷ / ₈ " x 14 ⁷ / ₈ "	12 ⁷ / ₈ " x 16 ⁷ / ₈ "
	18" x 24"	16 ⁷ / ₈ " x 22 ⁷ / ₈ "	18 ⁷ / ₈ " x 24 ⁷ / ₈ "
	22" x 28"	20 ⁷ / ₈ " x 26 ⁷ / ₈ "	22 ⁷ / ₈ " x 28 ⁷ / ₈ "
	24" x 36"	22 ⁷ / ₈ " x 34 ⁷ / ₈ "	24 ⁷ / ₈ " x 36 ⁷ / ₈ "
	30" x 40"	28 ⁷ / ₈ " x 38 ⁷ / ₈ "	30 ⁷ / ₈ " x 40 ⁷ / ₈ "
	36" x 48"	34 ⁷ / ₈ " x 46 ⁷ / ₈ "	36 ⁷ / ₈ " x 48 ⁷ / ₈ "
	36" x 60"	34 ⁷ / ₈ " x 58 ⁷ / ₈ "	36 ⁷ / ₈ " x 60 ⁷ / ₈ "

- Specify W x H orientation and wall or hanging mounting on order.
- Contact Stylmark for customized options or sizes.



All snap frames open on all four sides for easy graphic changes



External Power Supply

Sheet# 971709
Revision F (9/18)