



Showcases

Showcase systems offer a wide selection of framing, lighting and door options that allow you to integrate the components of your choice into a custom showcase that meets your exact specifications. Experience in showcases has enabled us to perfect the alignment of each component into clipped or straight configurations.

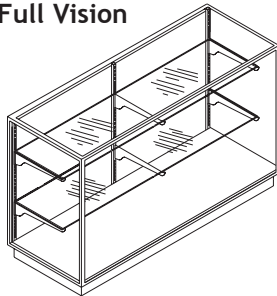
Showcase Configurations	2
Aluminum Glass End Showcases	3
Aluminum Wood End Showcases	11
Light Reflectors	17
Lighting Accessories	28

Showcase Configurations

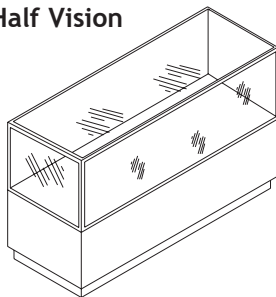
Stylmark’s showcases are available in a variety of view and shape configurations. In addition to those shown below, Stylmark provides vertical cases up to 48” tall as well as octagonal and L-shaped showcases. We can accommodate most heights and widths and our in-house engineering staff is always available to customize a case to fit your needs.

View Variations

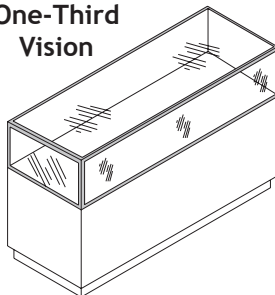
Full Vision



Half Vision



One-Third Vision



Shape Variations

- Top View -

Rectangular/Square

Customer Side

Double Clip

Customer Side

Left Hand Clip

Customer Side

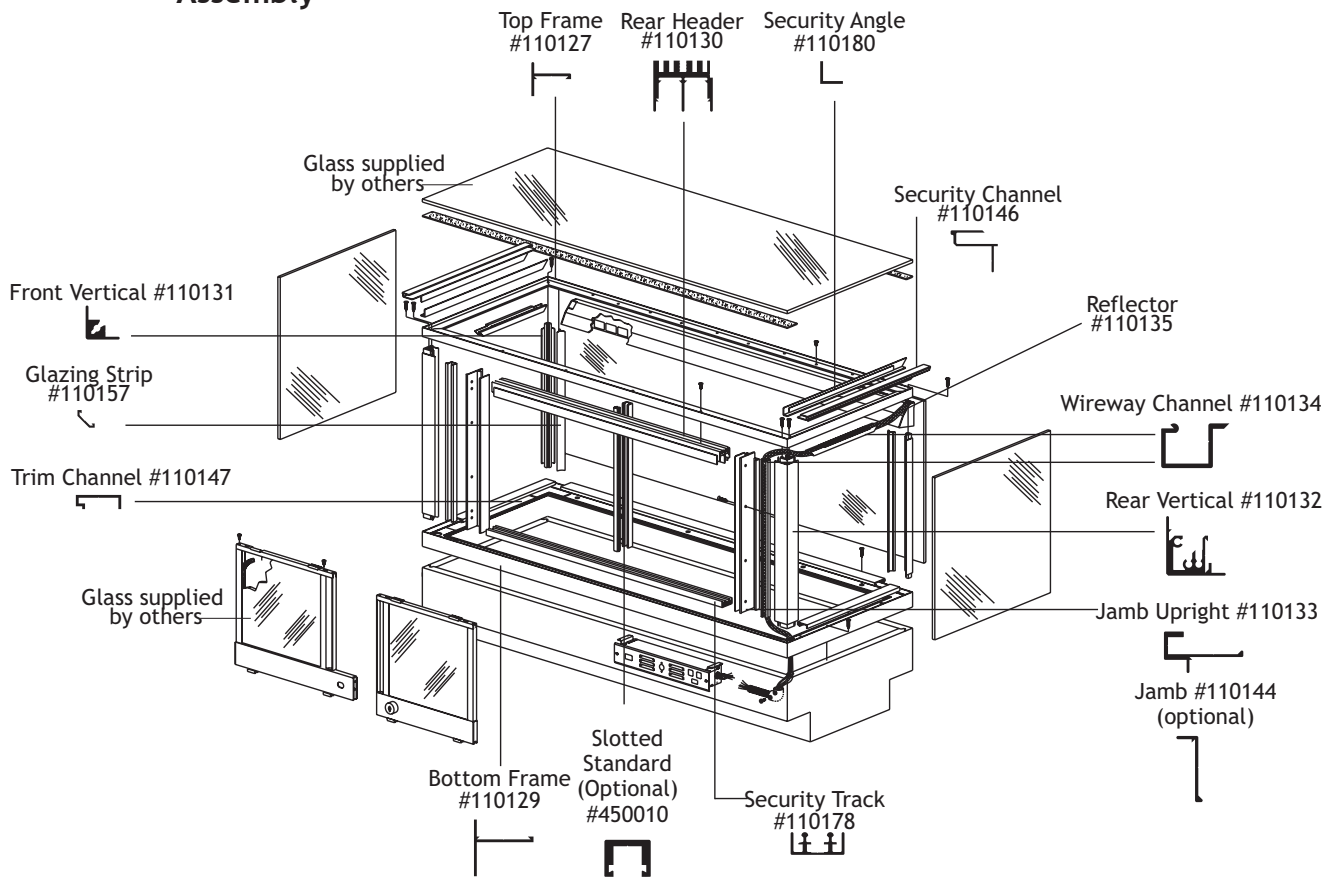
Right Hand Clip

Customer Side

Aluminum Glass End Showcases

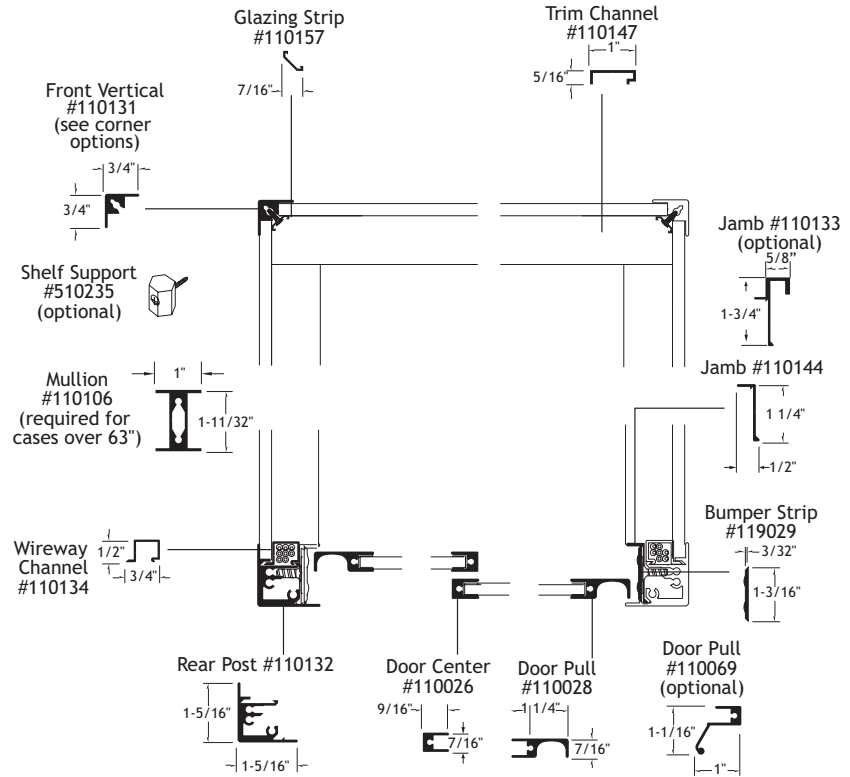
Creating sleek, contemporary displays is easy with Stylmark's glass end showcase products. Available in a variety of configurations and anodized finishes, our cases are secure due to top glass security channels and spot welded corner brackets. Glass end showcases are sold as knock-down, fabricated assemblies including frames, doors and reflectors.

Standard Showcase Assembly

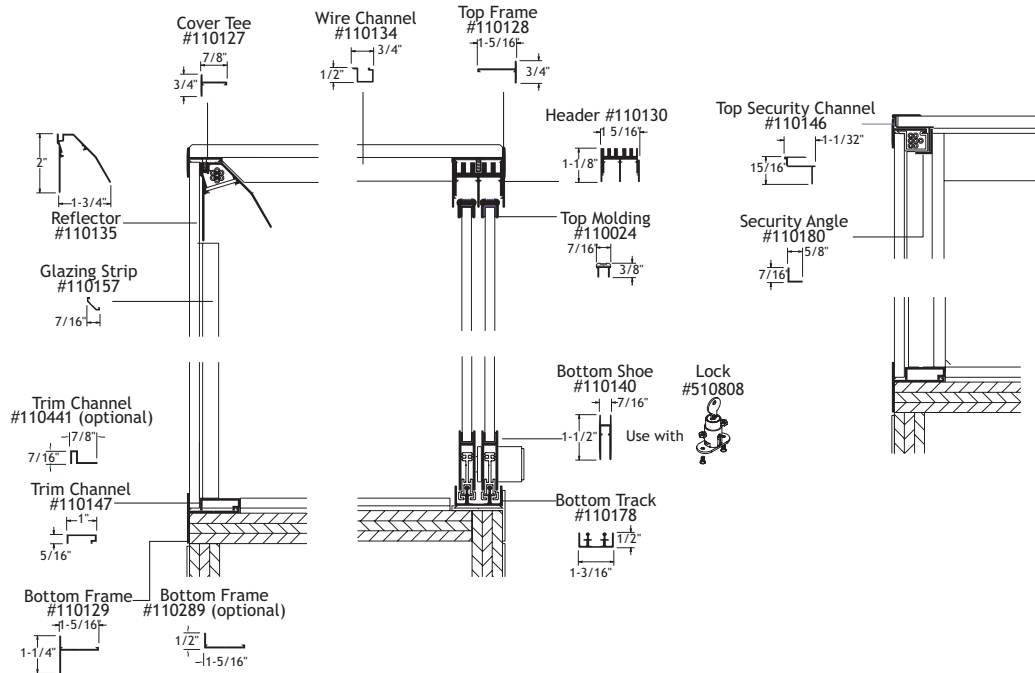


Aluminum Glass End Showcases

Showcase Components Typical Horizontal Section



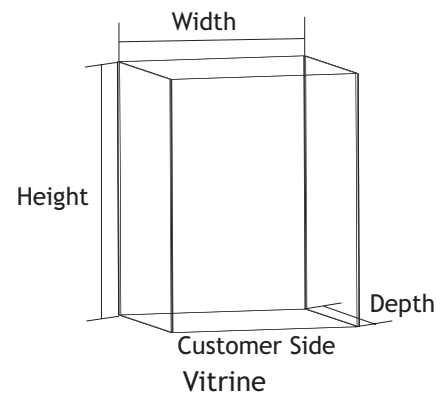
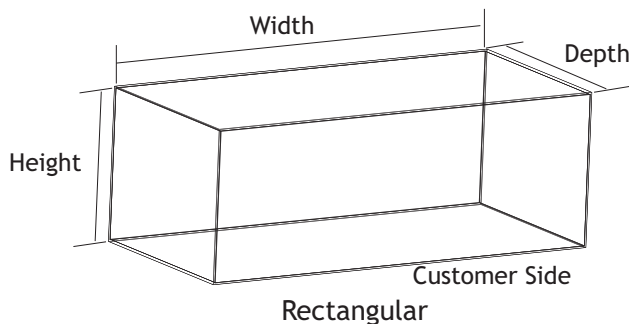
Showcase Components Typical Vertical Section



Notes: • Aluminum glass end showcase components are not sold individually.

Aluminum Glass End Showcases

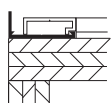
Rectangular Showcases



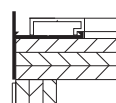
Rectangular Showcases

Model #	Reflector Location	Door Type	Bottom Profile (Standard or Low)	Jamb (Regular or Slotted)	Mullion (With or Without)
710111	Front Only	Rolling Door	Standard or Low	Regular or Slotted	With or Without
710112	Front and Rear	Rolling Door	Standard or Low	Regular or Slotted	With or Without
710113	Rear Only	Rolling Door	Standard or Low	Regular or Slotted	With or Without
710114	No Reflector	Rolling Door	Standard or Low	Regular or Slotted	With or Without
710115	Front Only	Wood Hinged Door	Standard or Low	Regular Only	With Mullion
710314	No Reflector	Glass Hinged Door	Standard or Low	N/A	Without Mullion

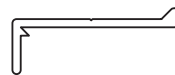
For lighting options, please refer to the showcase lighting section of this catalog



**Bottom Profile
Low**



**Bottom Profile
Standard**



**Jamb
Regular**



**Jamb
Slotted**

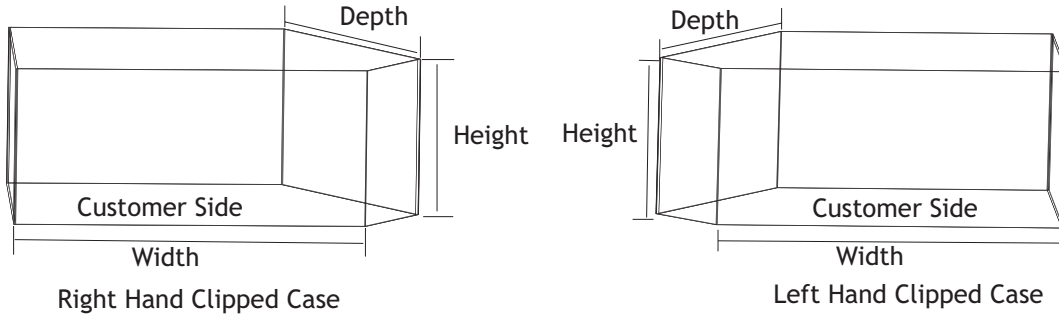


Mullion

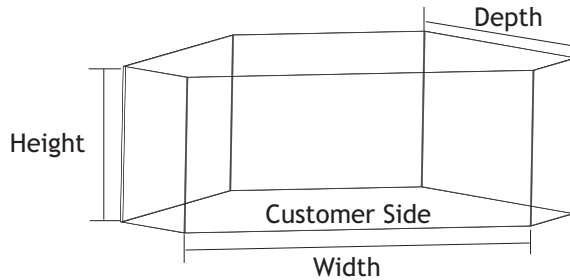
- Notes:**
- When ordering clipped or custom showcases, please provide shop drawings.
 - Aluminum glass end showcase components are not sold individually.
 - Indicate bottom trim channel for inside of case.

Aluminum Glass End Showcases

Single Clipped and Double Clipped Showcases



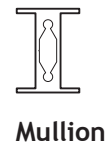
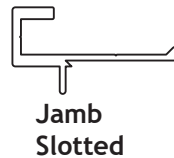
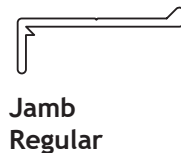
Right or Left Hand Clipped



Double Clipped

Single and Double Clipped Showcases

Model #	Description	Reflector Location	Door Type	Bottom Profile Standard	Jamb (Regular or Slotted)	Mullion (With or Without)
710121	Single Clipped	Front	Rolling Door	Standard	Regular or Slotted	Without Mullion
710131	Double Clipped	Front	Rolling Door	Standard	Regular or Slotted	With or Without
710135	Double Clipped	Front	Wood Hinged Door	Standard	Regular Only	Without Mullion



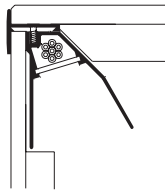
- Notes:**
- When ordering clipped or custom showcases, please provide shop drawings.
 - Aluminum glass end showcase components are not sold individually.
 - Indicate bottom trim channel for inside of case.

Aluminum Glass End Showcases

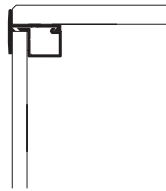
Showcase Options

Top Frame Options

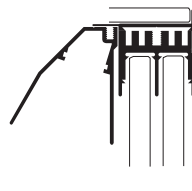
Choose from the options shown below or combine a front and rear reflector in one showcase.



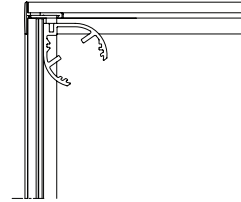
Top frame with front reflector and front glass



Top frame with no front reflector and front glass



Rear header with rear reflector



Top frame with teardrop reflector and front glass

Door Options

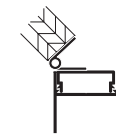
Fully framed security rolling doors are standard. Optional hinged doors can be ordered top, bottom or side hinged. Glass hinged door showcases typically have an extruded hinge. Piano hinge is an option. Glass and wood door panels are supplied by others.

Top or bottom hinged doors will allow for full width access to a 1/3 view case. Hinged doors with 1/4" thick panels, will accept Kenstan locks.

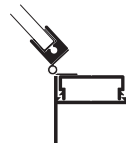
Wood Hinged Door - Top



Glass Hinged Door - Top



Wood Hinged Door - Bottom



Glass Hinged Door - Bottom

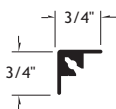


Glass Hinged Door - side

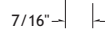
Front Corner Options

Front vertical #110131 is standard on all rectangular showcases and is used on clipped cases. Vertical #110142 is used only on clipped cases.

Front Vertical #110131



Glazing Strip #110157



Shelf Support #510235 (optional)

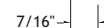


Shelf Support #510235 (optional)

Front Vertical #110142 135 degree



Glazing Strip #110157



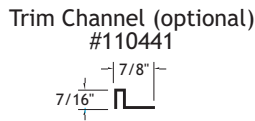
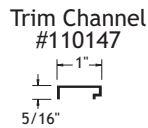
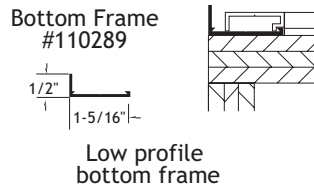
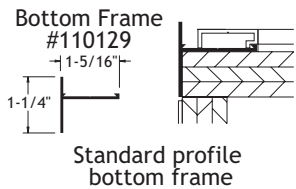
Shelf Support #510235 (optional)

Aluminum Glass End Showcases

Showcase Options

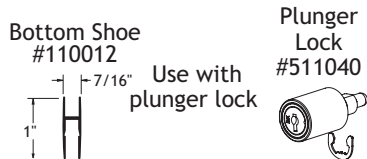
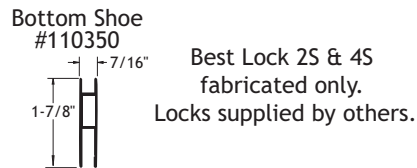
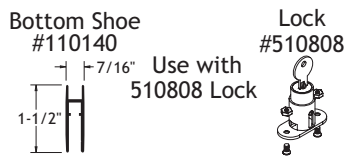
Bottom Frame Options

Choose from the options shown below for your showcase's bottom frame. Trim Channel #110147 can be used with either bottom frame profile. The Trim Channel covers the bottom frame and assists in installation of a pad.



Shoe and Lock Options

For standard aluminum glass end showcases with rolling doors you have the option of the shoe and lock combinations listed below.

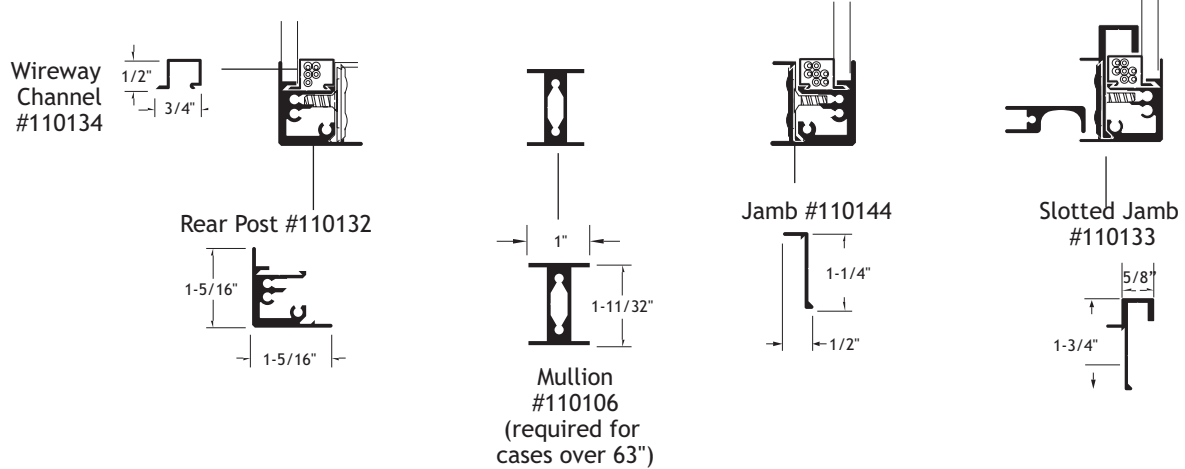


Aluminum Glass End Showcases

Showcase Options

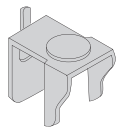
Rear Corner Options

Rear posts serve as a clear wireway downtube, door jamb and slotted standard for brackets. Full height door bumpers are included. Mullions are required on cases over 63" and serve as dividers for hinged doors.

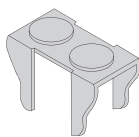


Hardware and Accessories

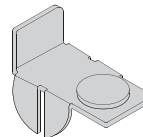
Part #550011
Shelf End Clip
for 550010



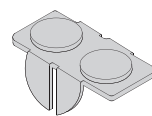
Part #550012
Shelf Center
Clip for 550010



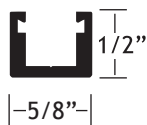
Part #550013
Glass End Clip
for 550006



Part #550014
Glass Center Clip
for 550006



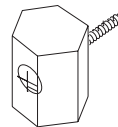
Part #450010
Slotted Standard



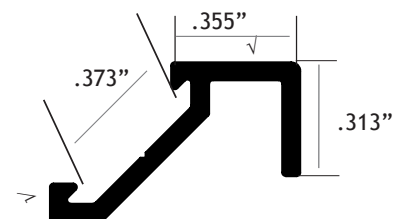
Part #450022
Rear Support
for #450010



Part #510235
Shelf Support



Part #110224
Glazing, Jamb w/o Leg



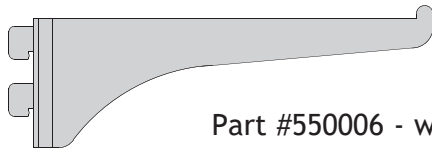
Aluminum Glass End Showcases

Hardware and Accessories

Part # 550006: Shelf Bracket

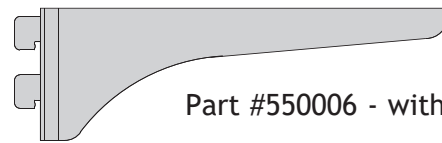
This aluminum shelf bracket is typically used with 1/4" glass shelving. It is available in 6", 8", 10", 12", 14", and 16" depths, with or without a lip. (Non-buffed or non-brush finishes only)

#550006 Shelf Bracket With Lip	
Part # 550006-01	6"
Part # 550006-02	8"
Part # 550006-03	10"
Part # 550006-04	12"
Part # 550006-05	14"
Part # 550006-06	16"



Part #550006 - with lip

#550006 Shelf Bracket Without Lip	
Part # 550006-07	6"
Part # 550006-08	8"
Part # 550006-09	10"
Part # 550006-10	12"
Part # 550006-11	14"
Part # 550006-12	16"

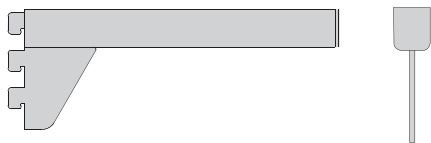


Part #550006 - without lip

Part # 550010

Heavy Duty Tubular Bracket

Our heavy duty tubular bracket adds a contemporary look with the ability of supporting 3/8" to 1/2" thick glass shelves with ease. It is available in 6", 8", 10", 12", 14", and 16" depths. (Buffed or brushed finishes only)



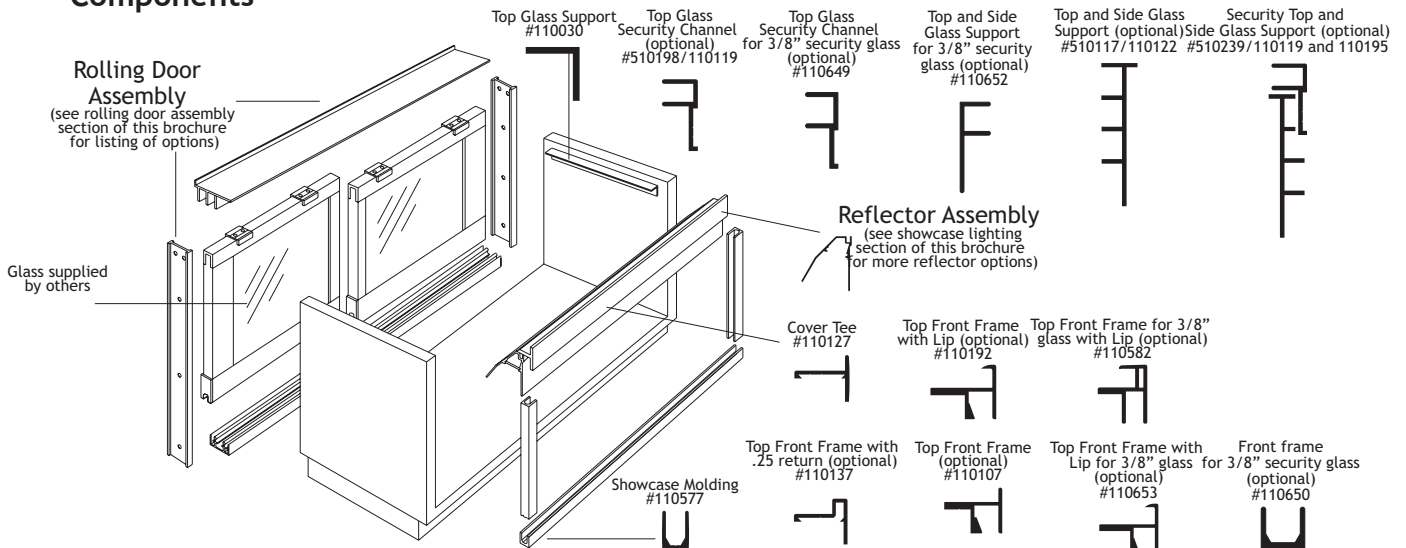
Heavy Duty Tubular Brackets #550010 brackets are available in six sizes:	
Part # 550010-01	6"
Part # 550010-02	8"
Part # 550010-03	10"
Part # 550010-04	12"
Part # 550010-05	14"
Part # 550010-06	16"

Notes: • Part #550006 is available only in brushed finish

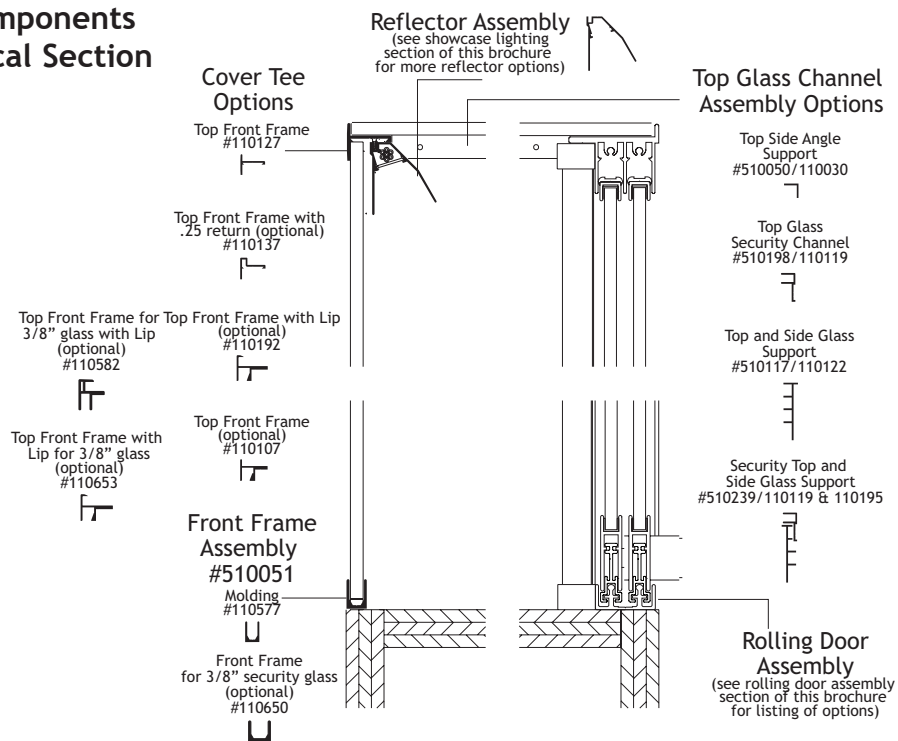
Aluminum Wood End Showcases

The classic beauty of Stylmark's anodized aluminum extrusions provides a subtle accent to finely crafted woods and laminates. Components are first fabricated and then finished and anodized. This assures that all reflectors, cover tees, glass channels, door hardware, brackets and standards match perfectly. Wood end showcase components are sold fabricated or in stock lengths for field fabrication.

Typical Showcase Components



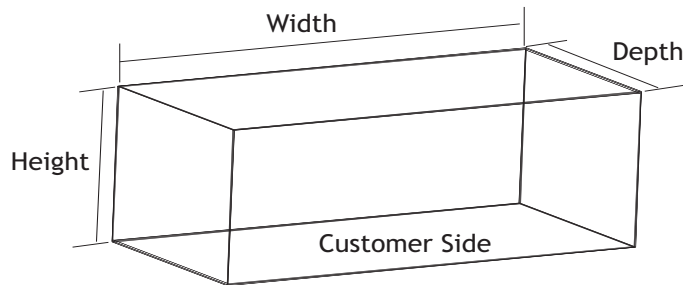
Showcase Components Typical Vertical Section



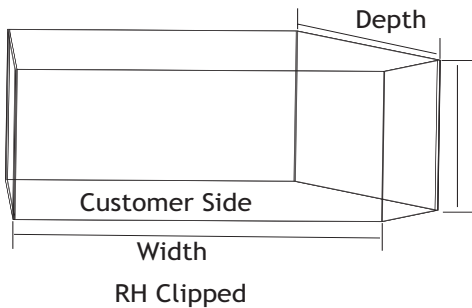
Aluminum Wood End Showcases

Ordering Wood End Showcases

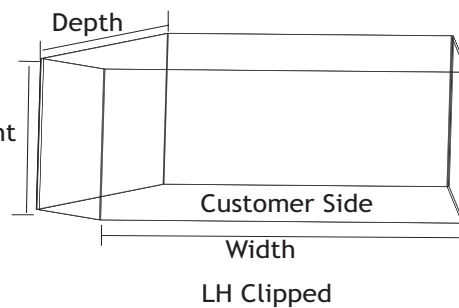
Reflector Assembly	Rolling Door Assembly	Front Glass Frame Assembly	Top Glass Channel Assembly
See Page 18	See Rolling Door Catalog	Width x Height	Depth



Rectangular

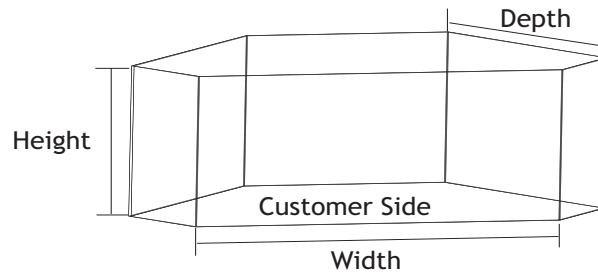


RH Clipped



LH Clipped

Right or Left Hand Clipped

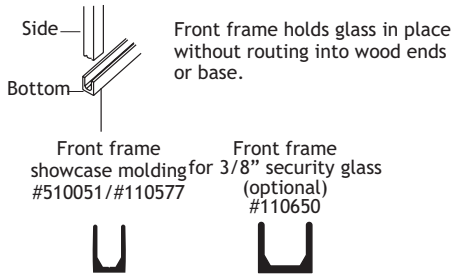


- Notes:**
- When ordering clipped or custom showcases, please provide shop drawings.
 - Slotted standards and brackets are ordered separately (see page 16).

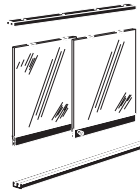
Aluminum Wood End Showcases

Choose from the options below to customize a showcase to your exact specifications.

Front Frame Options

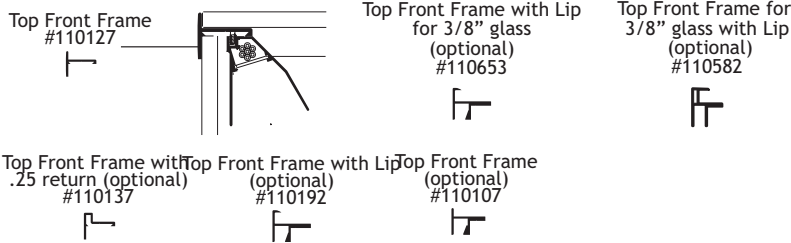


Rolling Door Assemblies



See the rolling door section of this brochure for full configuration details.

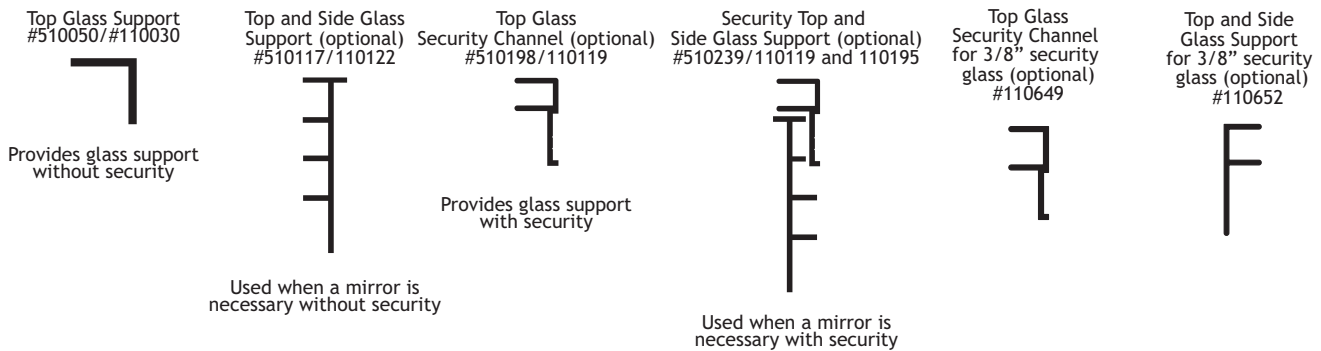
Cover Tee Options



*Some reflectors come with an integrated cover tee - see assemblies below.

Top and Side Glass Channel Assemblies

Top and side glass supports require no routing of wood ends or base to install. Glass supports give you the option to provide security.

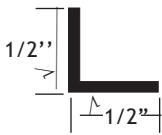


Notes: *Indicates integrated cover tee reflectors.

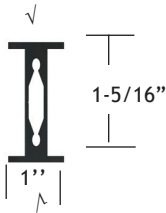
Aluminum Wood End Showcases

Hardware and Accessories

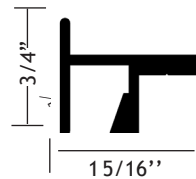
Part #110030
1/2" Angle



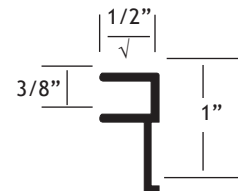
Part #110106
Mullion



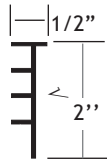
Part #110107
Front Frame



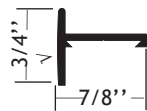
Part #110119
Security Channel



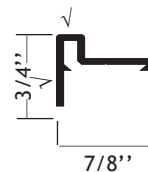
Part #110122
Top and Side
Glass Support



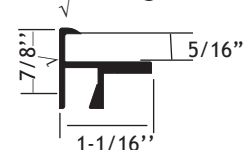
Part #110127
Top Front Frame



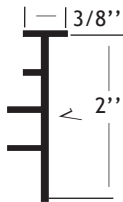
Part #110137
Cover T with
.25 Return



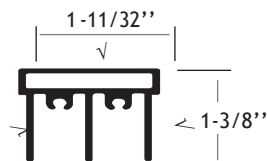
Part #110192
Front Frame
with Lip
for 1/4" glass



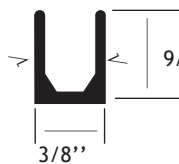
Part #110195
Security Top and
Side Glass Support



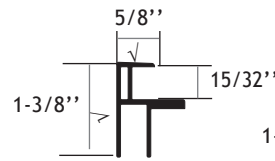
Part #110523
Backframe Header
without Top Glass



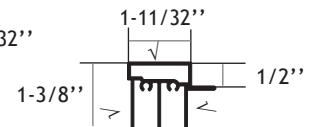
Part #110577
Showcase Molding
without holes
(with holes #410099)



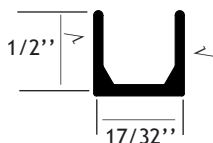
Part #110582
Showcase Rail



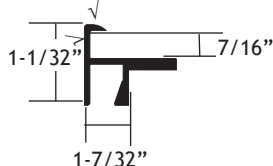
Part #110640
Backframe Header
without Top Glass
for 1/2" glass



Part #110650
Front Frame for 3/8"
Security Glass



Part #110653
Front Frame
with Lip
for 3/8" glass



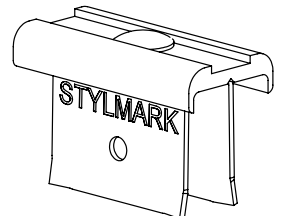
Part #119029
Vinyl Bumper



Part #232006
6" Steel Bracket



Part #511178
Top Guide Assembly



Notes: • With the exception of reflector assemblies, wood end showcase components can be ordered in stock lengths for customer fabrication.

√ = finished surface

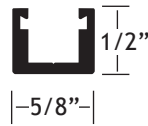
Aluminum Wood End Showcases

Hardware and Accessories

Part #232023
Slotted Steel Standard,
36''
(96'' #232028)



Part #450010
Slotted Standard



Part #450020
Heavy Duty
Slotted Standard



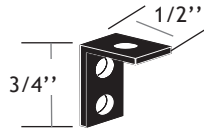
Part #450021
Rear Support for
#450020



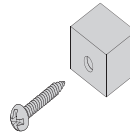
Part #450022
Rear Support
for #450010



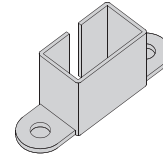
Part #510089
Mounting Bracket
Assembly for
110107/110192



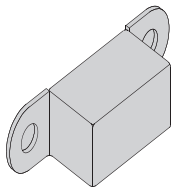
Part #550007
Foot and Cap
Assembly for
Aluminum Standard



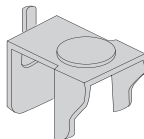
Part #550008
Chrome Bottom Cap
Assembly for Steel
Standard



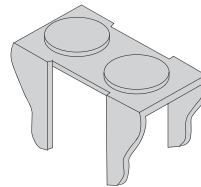
Part #550009
Chrome Top Cap
Assembly for
Steel Standard



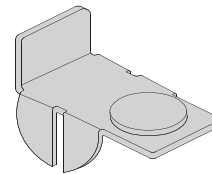
Part #550011
Shelf End Clip
for 550010



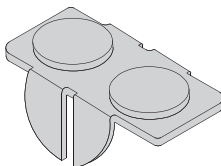
Part #550012
Shelf Center
Clip for 550010



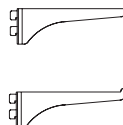
Part #550013
Glass End Clip
for 550006



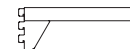
Part #550014
Glass Center Clip
for 550006



Part #550006
Aluminum Shelf Blade Bracket
with and without lip
Available in
6, 8, 10, 12, 14, 16''
(See page 11)

















Part #550010
Aluminum Tubular
Shelf Bracket
Available in
6, 8, 10, 12, 14, 16''
(See page 11)



Light Reflectors

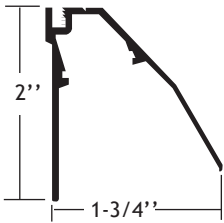
Stylmark’s showcase lighting products are created with design flexibility in mind. Our product line accommodates a variety of mounting configurations and lighting options from traditional light sources to new marketplace trends, like LED. Reflector profiles are streamlined to maximize viewable display space. All of our showcase lighting is component recognized by UL or ETL to US and Canadian standards.

ORDERING SHOWCASE REFLECTORS	
CHOOSE A PROFILE	 680100  680400  680600  683900 <small>(standard assembly)</small>  683900 <small>(screw port assembly)</small>  684200  685000
CHOOSE A COVER TEE	 110107*  110127  110137  110192*  110582  110653*  110800* <small>(FOR 680100 & 680200 REFLECTORS ONLY) (*FOR 683900 REFLECTORS ONLY)</small>
CHOOSE A MOUNTING SYSTEM	FLEX CONDUIT WITH MOUNT BRACKET OR RIGID EXPOSED DOWNTUBE WITH REFLECTOR END CAPS
DIMENSIONS	LENGTH OF REFLECTOR
REFLECTOR LOCATION	FRONT, REAR OR FRONT AND REAR

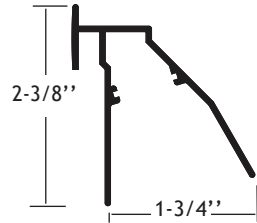
- Notes:**
- Grounded receptacles, part #230028, are sold separately (see page 32).
 - LED reflectors ordered separately from showcase.

Light Reflector Assemblies

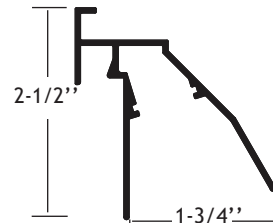
Reflector Profiles



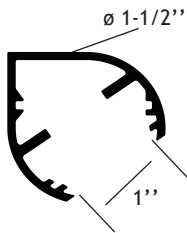
680100 series



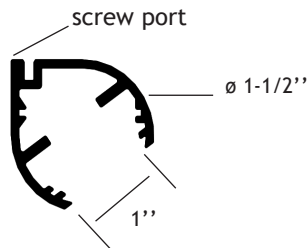
680400 series



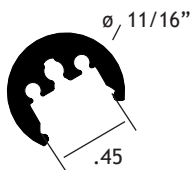
680600 series



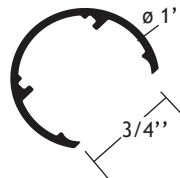
683900 series
(standard assembly)



683900 series
(screw port assembly)



684200 series



685000 series

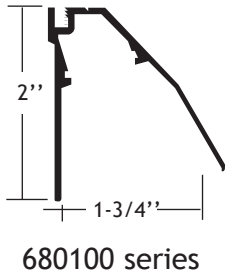
Light Reflectors

Light Source Specifications

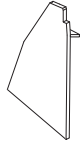
Lamp Type	Lamp Destination	Rated Watts	Nominal Lamp Length	Color Temp K	Color Rendering Index	Rated Lumens	Rated Lamp Life
LED	Premium (24Vdc) MIG 24	9.0W/ft	12" / 6"	ANSI: 3500K Bin 4000K Bin 5000K Bin	80+	700 lm/ft	50,000+ Hrs
	Deluxe (24Vdc) MIG 24	4.6W/ft	12" / 6"		80+	350 lm/ft	50,000+ Hrs
	Premium (24Vdc) NIGEL	6.7W/ft	20" / 12" / 4"	ANSI: 3500K Bin 4000K Bin 5000K Bin	80+	700 lm/ft	50,000+ Hrs
	Deluxe (24Vdc) NIGEL	3.8W/ft	20" / 12" / 4"		80+	500 lm/ft	50,000+ Hrs

Light Reflectors

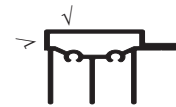
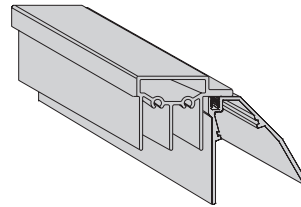
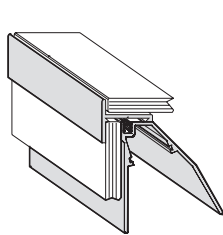
Reflector Assemblies



#510061
Endcap Assembly for
680100 Series Assemblies



Front Reflector/Cover Tee Options

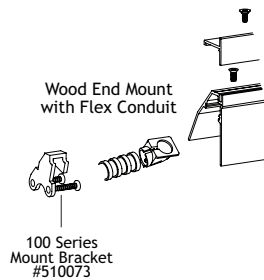
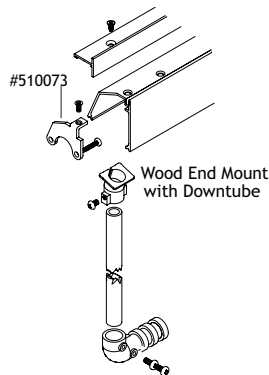


Showcase Channel
#110102

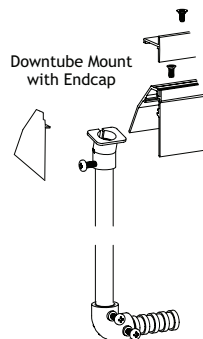


Showcase Channel
#110071

Mounting Options for Aluminum Wood End Showcases



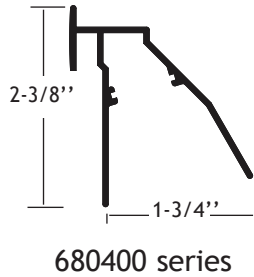
Mounting Options for Aluminum Glass End Showcases



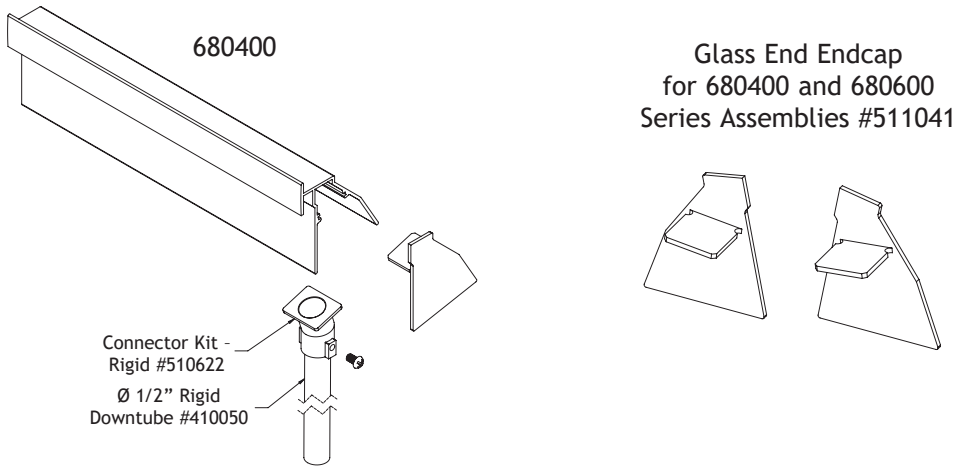
√ = finished surface
Drawings are not to scale

Light Reflectors

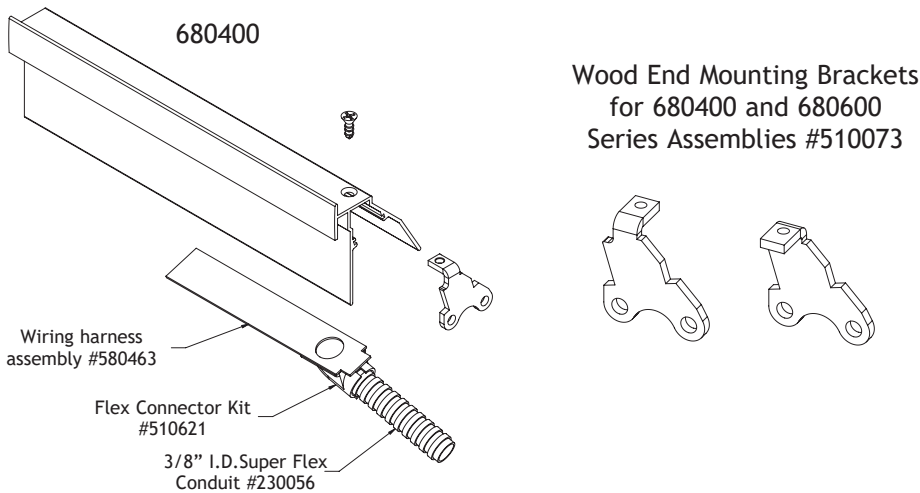
Reflector Assemblies



Mounting Options for Aluminum Glass End Showcases



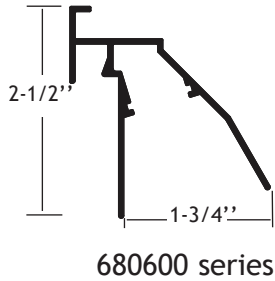
Mounting Options for Wood End Showcases



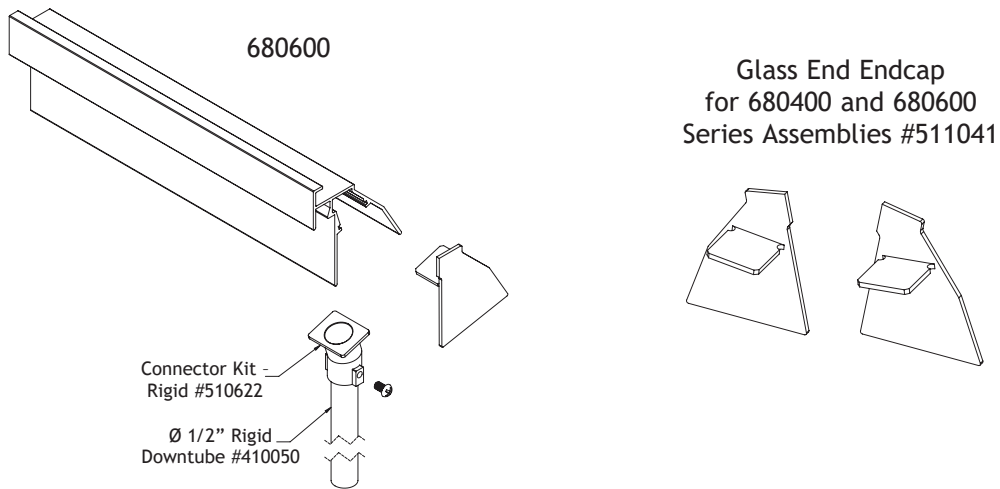
√ = finished surface
Drawings are not to scale

Light Reflectors

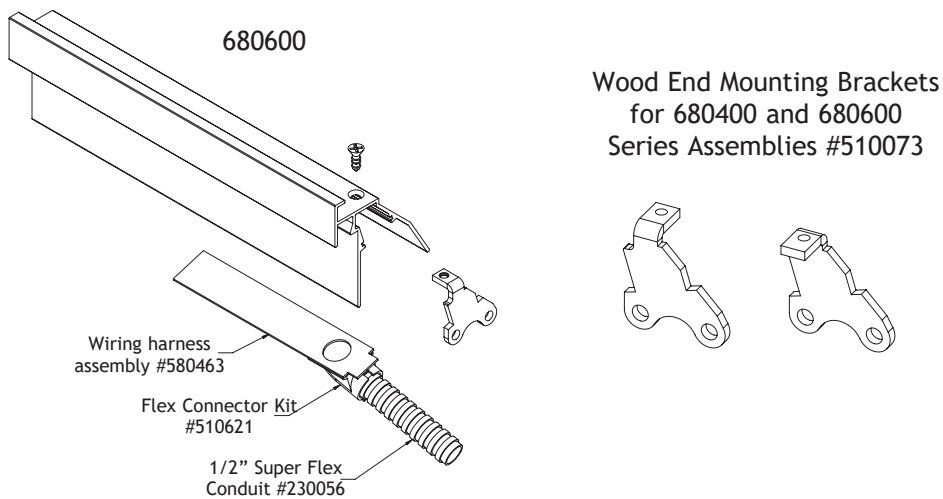
Reflector Assemblies



Mounting Options for Aluminum Glass End Showcases



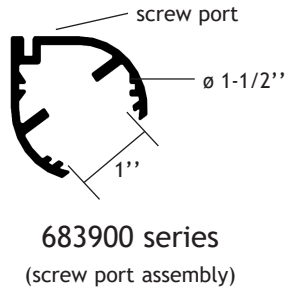
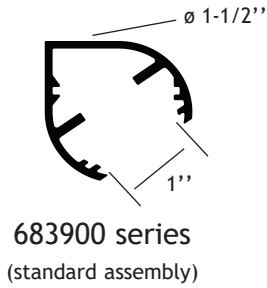
Mounting Options for Wood End Showcases



√ = finished surface
Drawings are not to scale

Light Reflectors

Reflector Assemblies

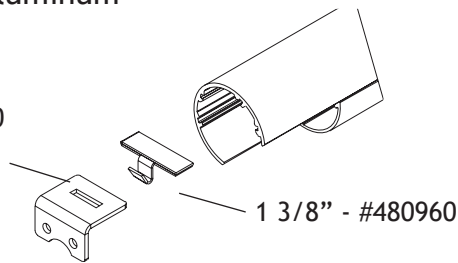


#481057 LH and 481056 RH
Endcaps for 683900 Series
Assemblies



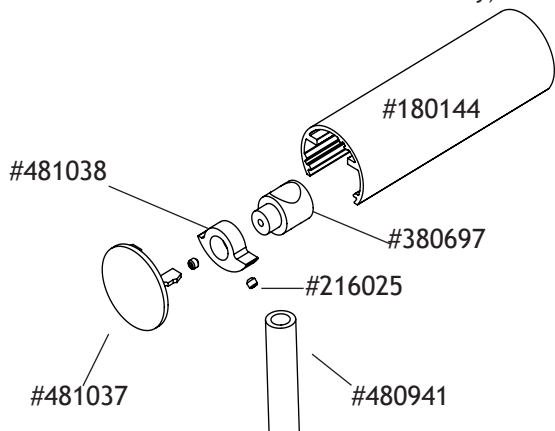
Mounting Options for Aluminum Wood End Showcases

1 1/2" - #380270
1 3/8" - #480991



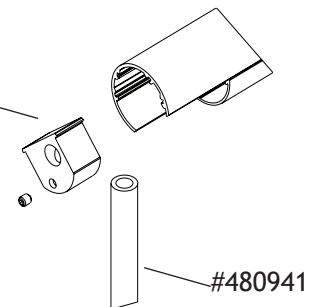
Rotating Downtube Option (683700 Series Only)

(Extrusion #180144 and components are available but not as an assembly)

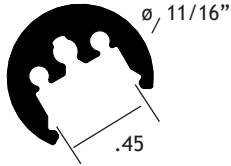


Mounting Options for Aluminum Glass End Showcases

1 3/8" - #481041



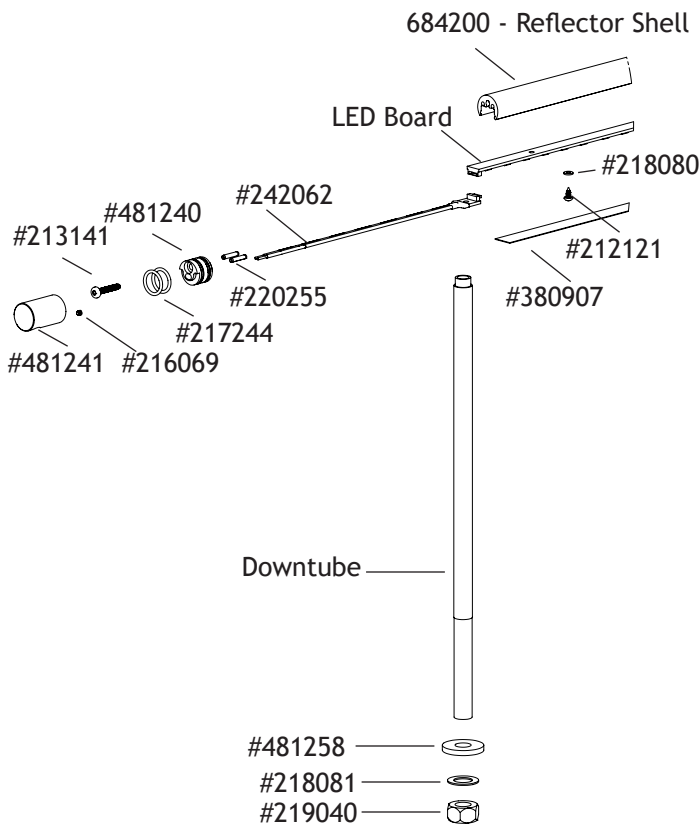
Light Reflectors



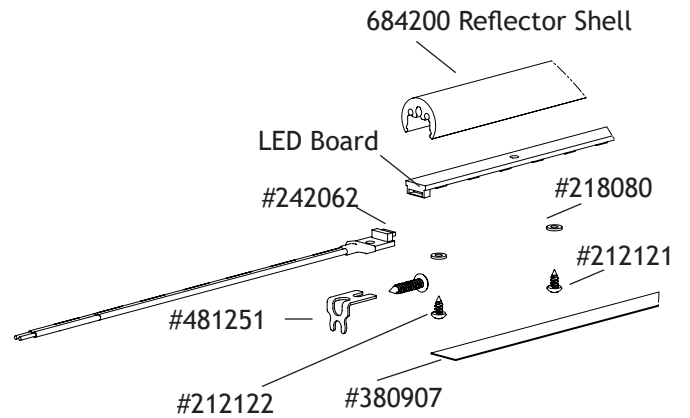
684200 series

LED Board	Model #	3500K	4000K	5000K
Deluxe 4"	242055	-200	-300	-400
Deluxe 12"	242056			
Deluxe 20"	242057			
Premium 4"	242058			
Premium 12"	242059			
Premium 20"	242060			

Mounting Options for Rotating Downtube



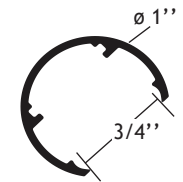
Mounting Options for Wood End Showcase



√ = finished surface
 Drawings are not to scale

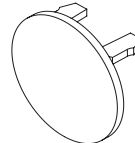
Light Reflectors

Reflector Assemblies (LED only)

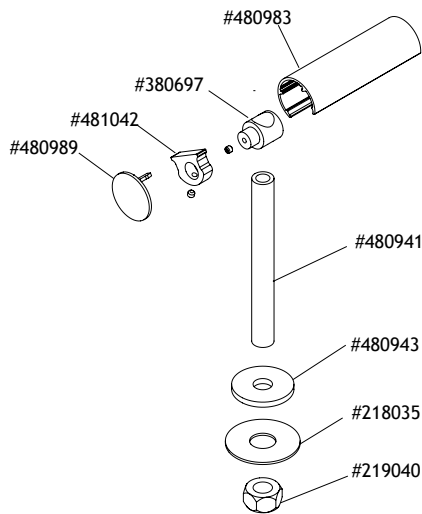


685000 series

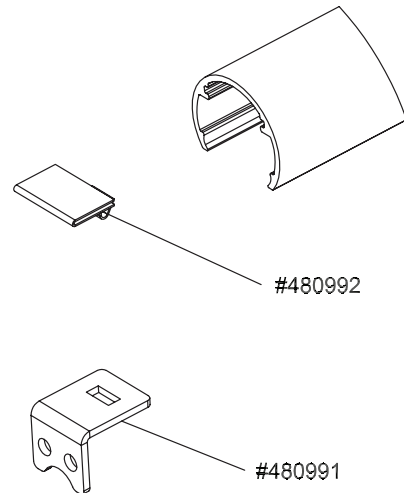
#480989
Endcap for 685000 Series
Assemblies



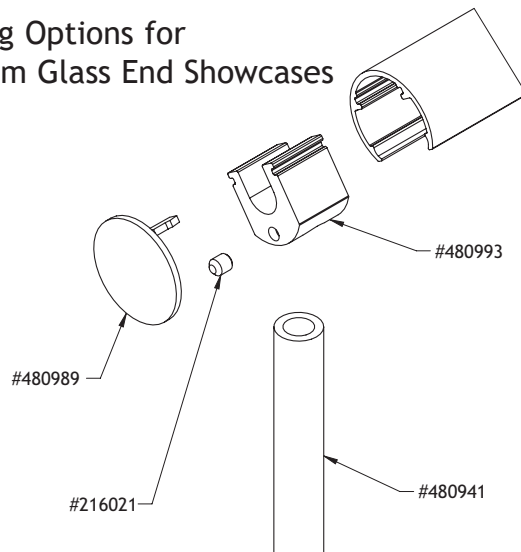
Rotating Downtube Option



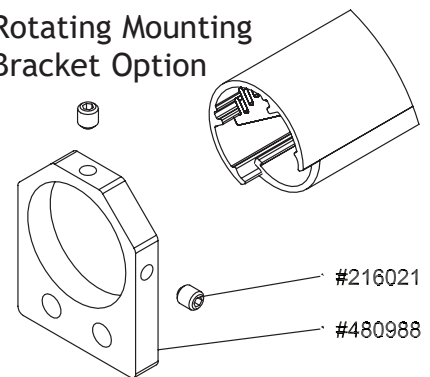
Mounting Options for Aluminum Wood End Showcases



Mounting Options for Aluminum Glass End Showcases



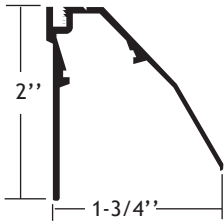
Rotating Mounting Bracket Option



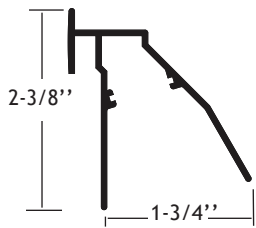
√ = finished surface
Drawings are not to scale

Reflector Extrusion Profiles

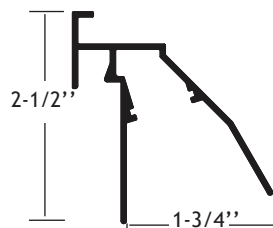
These profiles can be ordered as stock length extrusions.



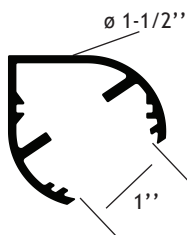
Extrusion #110135



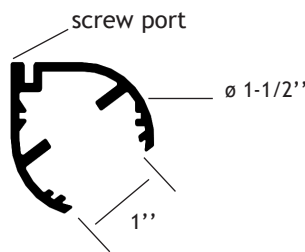
Extrusion #180139



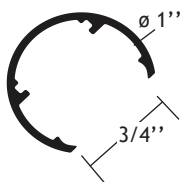
Extrusion #110719



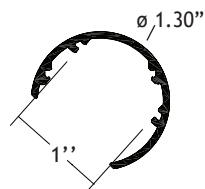
Extrusion #180147



Extrusion #180150



Extrusion #180133



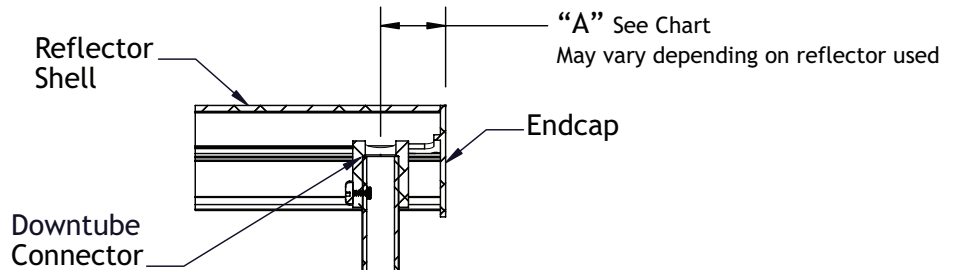
Extrusion #180144

Light Reflectors

Installation of Downtube
for 680100 Series
680400 Series, 680600 Series,
683900 Series, 684200 Series,
685000 Series.

Installation of Downtube

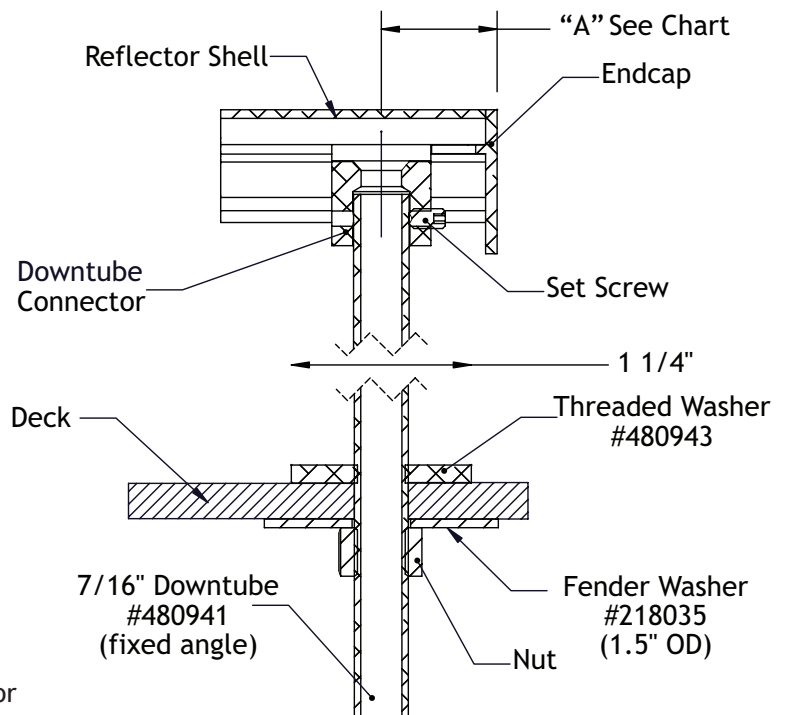
Series	Fixed "A"
680100 680400 680600	1-1/2"



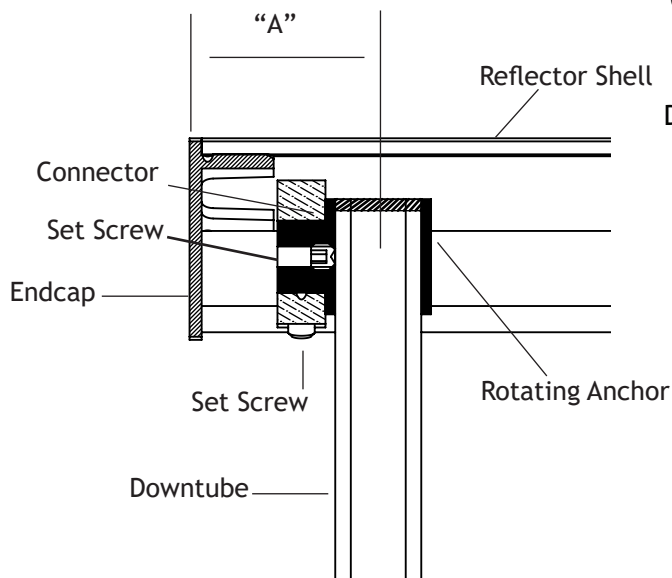
Installation of Downtube

Series	Adj. Angle "A"	Fixed "A"
683900	N/A	7/8"
685000	11/16"	25/32"

Fixed



Adj. Angle

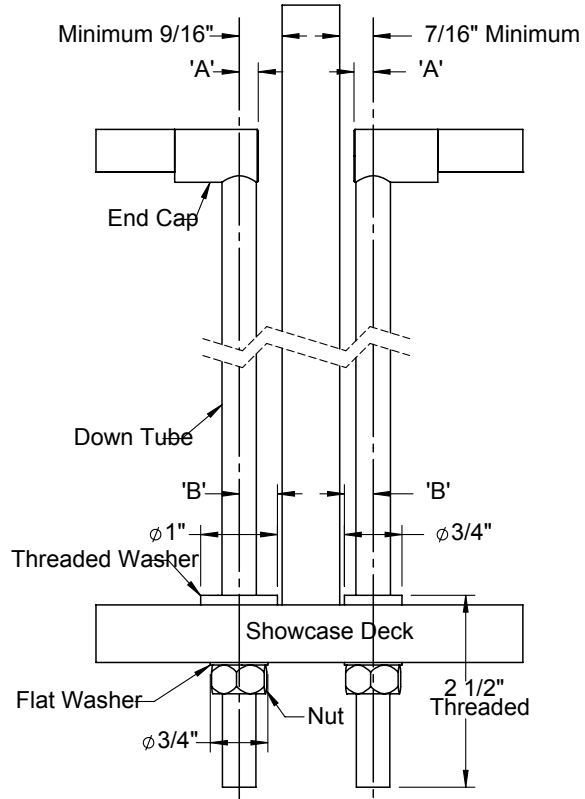


Light Reflectors

Model 684200

Installation of Downtube

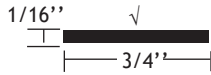
Series	Adj. Angle "A"	Fixed "A"
684200 with 1" Washer	1/4"	1/2"
684200 with 3/4" Washer	1/4"	3/8"



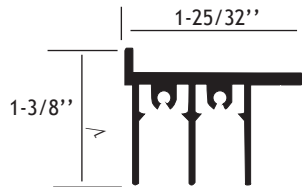
Lighting Accessories

Hardware and Accessories

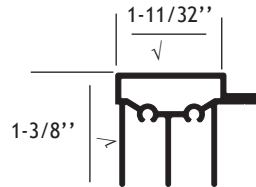
Part #110099
Reflector Strip



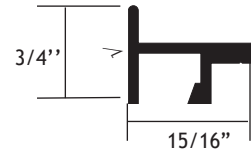
Part #110071
Showcase Channel



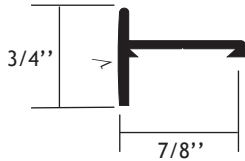
Part #110102
Top Rear
Showcase Channel



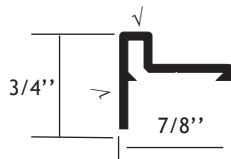
Part #110107
Front Frame



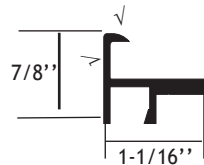
Part #110127
Top Front Frame



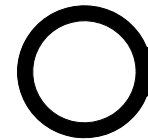
Part #110137
Cover Tee
with .25 Return



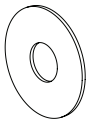
Part #110192
Front Frame with Lip



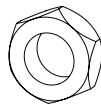
***Part # 110495**
Connector, Straight



Part #218035
Fender Washer
1-1/2" O.D.



Part #219039
Nut



***Part #230056**
3/8" I.D. Super Flex
Conduit, 250 ft.

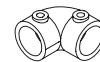


***#230056-01** 3/8" I.D.
Super Flex Conduit, 7 ft.

***#230056-02** 3/8" I.D.
Super Flex Conduit, 4 ft.

***#230056-04** 3/8" I.D.
Super Flex Conduit, per ft.

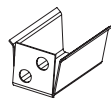
***Part #310124**
90° Connector



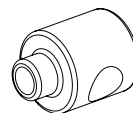
Part #380270
LED 1-1/2" Reflector
Mount Bracket



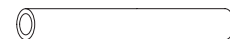
Part #380491
LED 1" Reflector
Mount Bracket



Part #380583
Connector



Part #410050
1/2" Downtube
3/8" I.D.



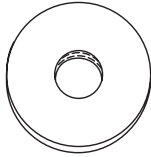
Notes: * Not UL Listed or Recognized Component

√ = finished surface

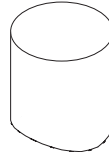
Lighting Accessories

Hardware and Accessories

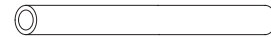
Part #480753
3/8" Threaded Washer
1" O.D.



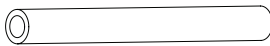
Part #480756
Support Puck



Part #480757
3/8" Downtube
9/32" I.D.



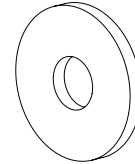
Part #480941
7/16" Downtube
9/32" I.D.



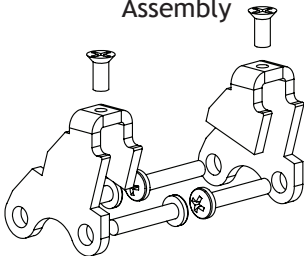
Part #480942
Downtube Threaded
9/32" I.D.



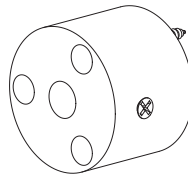
Part #480943
7/16" Threaded Washer
1-1/4" O.D.



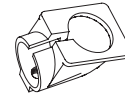
Part #510073
Mount Bracket
Assembly



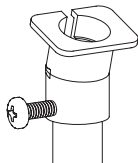
Part #510378
Downtube Flange



Part #510621
Flex Connector
3/8" I.D. Conduit



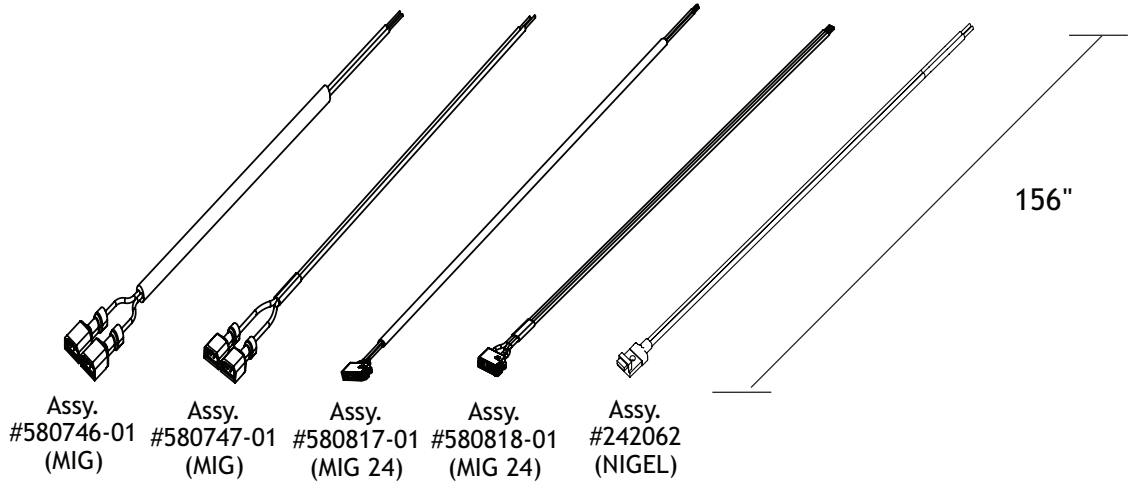
Part #510622
Rigid Connector
1/2" Downtube



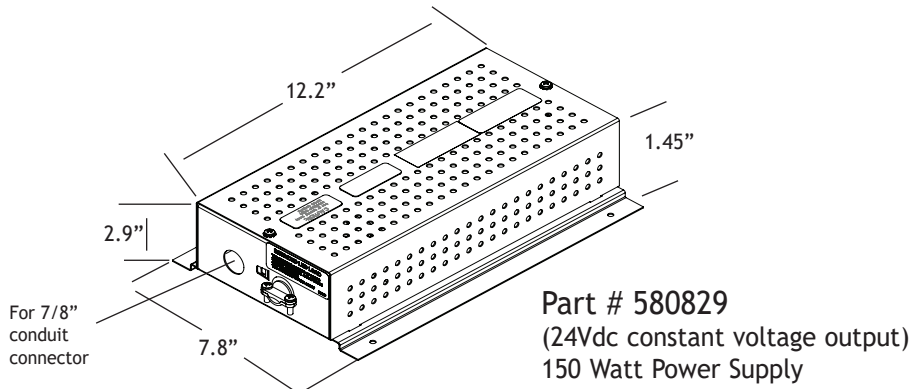
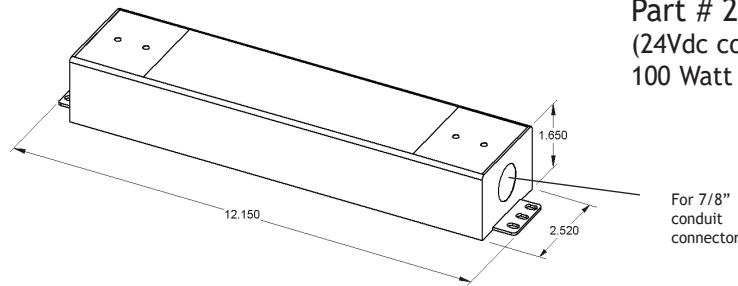
Lighting Accessories

LED Power Supplies and Drivers

LED LOW VOLTAGE POWER CABLES (Connects power supply to LED reflector)



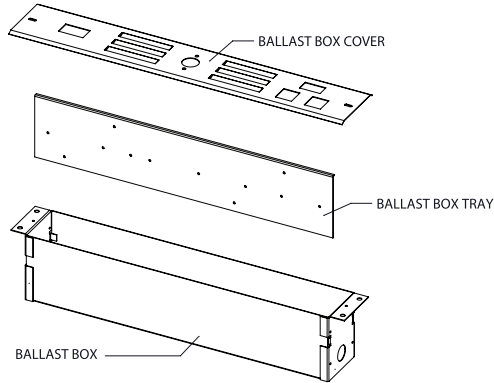
Power Supplies



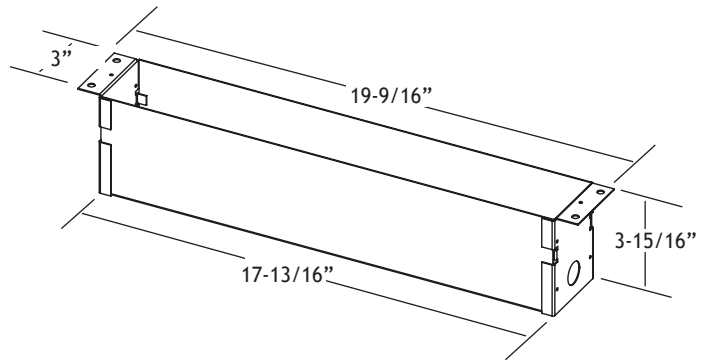
Lighting Accessories

Single Ballast Box and Components

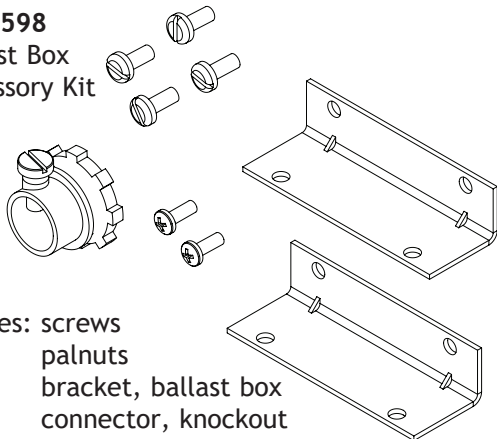
#510599
Single Ballast Box Kit



#510101
Single Ballast Box



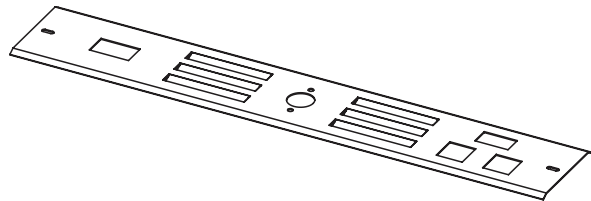
#510598
Ballast Box
Accessory Kit



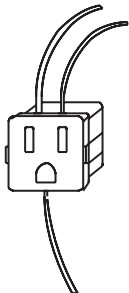
Includes: screws
nuts
bracket, ballast box
connector, knockout

Ballast Box Cover Plate

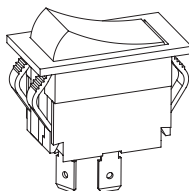
#310079 - Painted Black Steel
#310577 - Anodized Aluminum (See Stylmark
anodized color offerings)



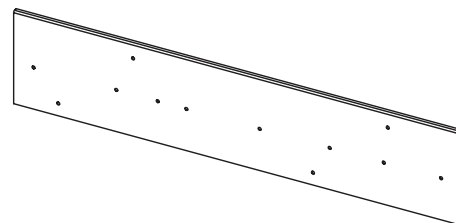
#230028
Grounded Receptacle



#230085
Rocker Switch



#310080
Single Ballast Box Insert Tray for Single Ballast Box



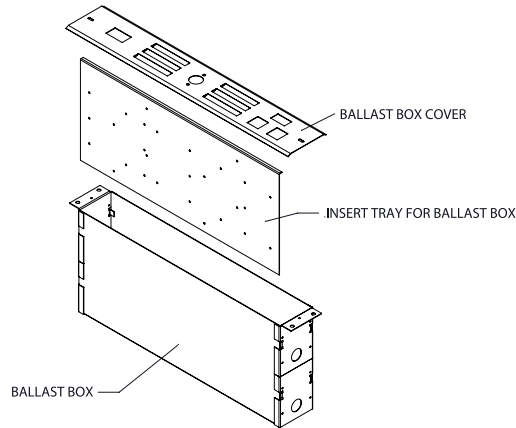
Notes:

- #510600 - Single ballast box kit and accessories includes part numbers #510599 and #510598

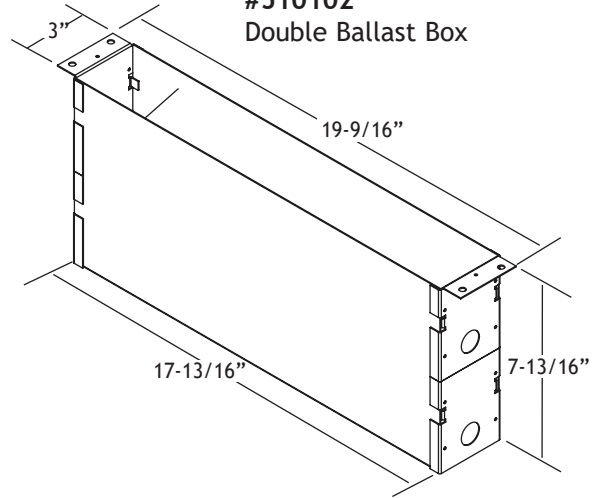
Lighting Accessories

Double Ballast Box and Components

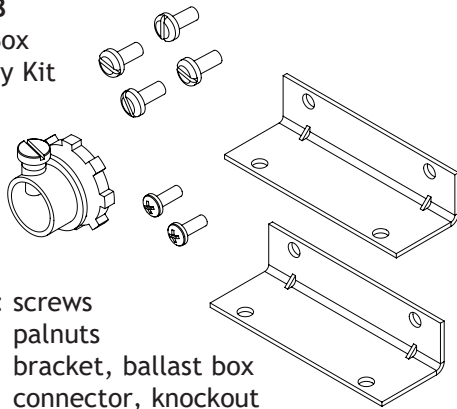
#510625
Double Ballast
Box Kit



#510102
Double Ballast Box



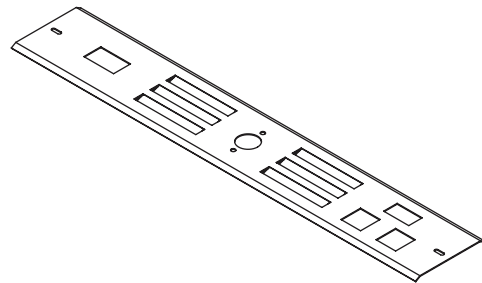
#510598
Ballast Box
Accessory Kit



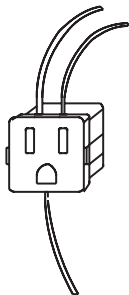
Includes: screws
palnuts
bracket, ballast box
connector, knockout

Ballast Box Cover Plate

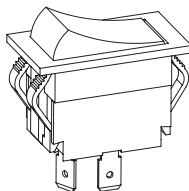
#310079 - Painted Black Steel
#310577 - Anodized Aluminum (See Stylmark
anodized color offerings)



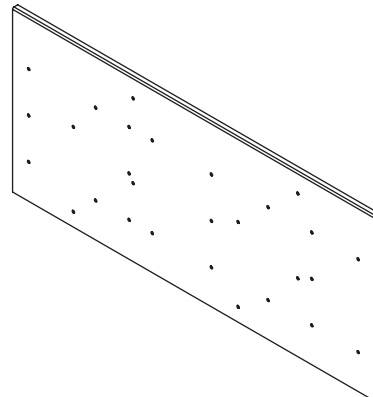
#230028
Grounded Receptacle



#230085
Rocker Switch



#310085
Ballast Box Insert Tray for Double Ballast Box



Notes:

- #510626 - Double ballast box kit and accessories includes part numbers #510625 and #510598